



CHARGER

Light Electric Vehicle
Electric Vehicle
Industry

POWER
NEVER ENDS

About FSP Group

FSP Group is the leading power supply manufacturer in the world.

Since established in 1993, the company has been committed to its R&D capability, production capacity and product quality to stand out from the competitive market.

FSP Group provides a great variety of products related to power and electronics technology, such as adapter, open frame, LED Lighting, Medical, LCD TV, Industrial / Desktop computers and Servers to fulfil our OEM / ODM customers' needs. And FSP Group is now making more efforts to develop better environment friendly products, including PV Inverter, UPS and ESS products.

FSP Group's global presence in Taiwan, Brazil, China, Germany, Sweden, France, India, Japan, Korea, Russia, Turkey, UK, and USA has made it easier to provide immediate support. As FSP Group is aiming to create a win-win situation, we treat our customers as friends by providing customized products and excellent service.

For FSP Group, making **Power never ends** will be our sustainable goal.

Our vision:

To be the global leading provider of green energy solutions, touch people's life, contribute to the better environment.

Our mission:

Providing the best value to customers, employees and shareholders by our innovative service and high quality products.

Energetic | **Friendly** | **Simple** | **Reliable**

POWER
NEVER ENDS



FSP Battery Charger Solutions

-Customized Design and Service-

FSP provides various battery charger solutions that are applicable to the 7S-16S battery module; the output power ranges from 84W-20KW, providing wide applications for different fields, including external chargers or on-board chargers. The optimized circuit design, programmable charging curve, and highly efficient heat dissipation processing can protect the battery effectively and prolong battery life, providing stable and lasting operation time while reducing costs. We provide customized service and design products that are most suitable for customer applications based on different battery specifications, usage environment conditions, and safety requirement assessments.

Product Advantages and Applications

Light Electric Vehicle Applications

Battery chargers that are suitable for handheld and portable devices. The products are lightweight and compact and are used in consideration of the various safety regulations for physical contact situations; for example the charger for electric bicycles. They have 90% high energy conversion efficiencies, miniaturized and portable design features, visualized charging status indications, and can charge under $-10^{\circ}\text{C}\sim+40^{\circ}\text{C}$ environments. The related products already passed safety certifications in many countries for your selection.

- Four charging modes to maintain batteries performance.
- Fan-less design with natural heat dissipation.
- Built-in protections: OCP, OVP, OTP, SCP.
- Safety certifications: IEC / UL variants.
- Wide operation range.

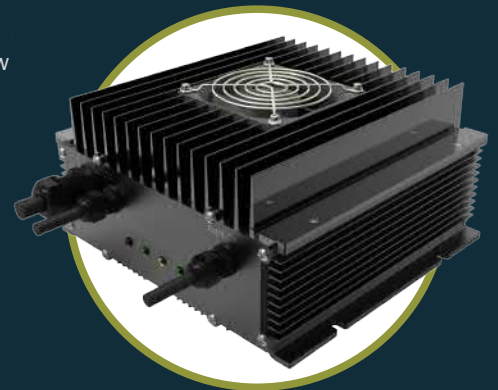


Electric Vehicle Applications

Battery chargers that are suitable for purely electric/hybrid power/range extender and other new energy transportations.

The products have high conversion efficiencies and meets water-proof and dust-proof levels, able to operate normally under rigorous environments, ensuring smooth and stable operations of transportation.

- The CC-CV charging mode keeps the battery 100% performance.
- Cooling design for rigorous environments ($-30^{\circ}\text{C} \sim +85^{\circ}\text{C}$).
- Water-proof and dust-proof up to IP67.
- Temperature Monitoring.
- Connection reverse protection.
- High input voltage protection.
- Optional CAN bus functionality.
- For on-board / off-board applications.

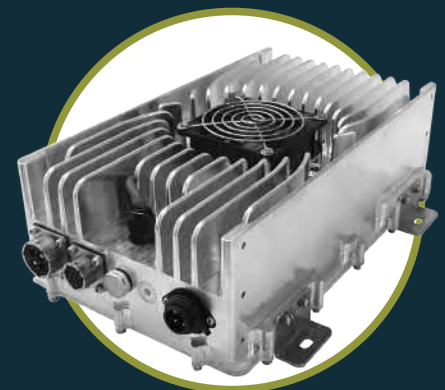


Industry Applications

Suitable for mobile warehouse machineries or handling equipment that need frequent high-level vibrations, impacts, and temperature changes (including refrigeration).

FSP can customize highly reliable and high charging quality on-board chargers according to customer needs.

- Active heat dissipation system can effectively extend the charger's life.
- High reliability and charge quality.
- Long usage time in different operating modes.
- Multi products are available for different applications.
- Optional CAN bus functionality.
- For off-board EV application.



Light Electric Vehicle

Battery Chargers



SPECIFICATIONS	24V (6S/7S) BATTERY CHARGER		
MODEL	FSP059-7S2AC8	FSP147-7S5AC8	FSP235-7S8AC18
DC OUTPUT			
Output Voltage (max.)	29.4 V	29.4 V	29.4 V
Output Current (max.)	2.0 A	5.0 A	8.0 A
Output Power (max.)	59 W	147 W	235 W
Efficiency	≥ 90%		
AC INPUT			
Input Voltage Range	90 Vac ~ 264 Vac	198 Vac ~ 264 Vac	90 Vac ~ 264 Vac
Input Frequency Range	47 Hz ~ 63 Hz		
MECHANICAL			
Dimensions	128 x 67 x 32 mm	177 x 86 x 32 mm	177 x 86 x 32 mm
Weight	300 g	560 g	680 g
Cooling	Convection		
ENVIRONMENTAL			
Enclosure	IP 50		
Operating Temperature	-10°C ~ +40°C		
Storage Temperature	-20°C ~ +80°C		

SPECIFICATIONS	36V (10S) BATTERY CHARGER					
MODEL	FSP063-10S1AC8	FSP168-10S4AC8	FSP252-10S6AC18	FSP084-10S2AC8H	FSP168-10S4AC8H	FSP252-10S6AC8H
DC OUTPUT						
Output Voltage (max.)	42.0 V	42.0 V	42.0 V	42.0 V	42.0 V	42.0 V
Output Current (max.)	1.5 A	4.0 A	6.0 A	2.0 A	4.0 A	6.0 A
Output Power (max.)	63 W	168 W	252 W	84 W	168 W	252 W
Efficiency	≥ 90%					
AC INPUT						
Input Voltage Range	90 Vac ~ 264 Vac			180 Vac ~ 264 Vac		
Input Frequency Range	47 Hz ~ 63 Hz			47 Hz ~ 63 Hz		
MECHANICAL						
Dimensions	128 x 67 x 32 mm	177 x 86 x 32 mm	177 x 86 x 32 mm	128 x 67 x 32 mm	177 x 86 x 32 mm	177 x 86 x 32 mm
Weight	300 g	560 g	680 g	300 g	560 g	680 g
Cooling	Convection					
ENVIRONMENTAL						
Enclosure	IP 50					
Operating Temperature	-10°C ~ +40°C					
Storage Temperature	-20°C ~ +80°C					

Light Electric Vehicle

Battery Chargers

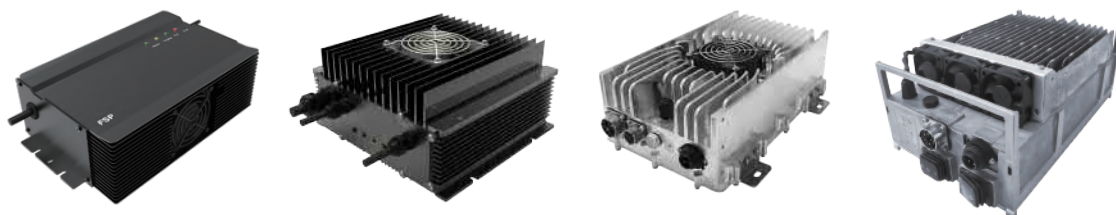


SPECIFICATIONS	48V (12S/13S/14S) BATTERY CHARGER				
MODEL	FSP151-12S3AC8	FSP164-13S3AC8	FSP176-14S3AC8	FSP235-14S4AC18	FSP246-13S4A5C18
DC OUTPUT					
Output Voltage (max.)	50.4 V	54.6 V	58.8 V	58.8 V	54.6 V
Output Current (max.)	3.0 A	3.0 A	3.0 A	4.0 A	4.5 A
Output Power (max.)	151 W	164 W	176 W	235 W	246 W
Efficiency	≥ 90%				
AC INPUT					
Input Voltage Range	90 Vac ~ 264 Vac				
Input Frequency Range	47 Hz ~ 63 Hz				
MECHANICAL					
Dimensions	177 x 86 x 32 mm	177 x 86 x 32 mm	177 x 86 x 32 mm	177 x 86 x 32 mm	177 x 86 x 32 mm
Weight	560 g	540 g	560 g	680 g	680 g
Cooling	Convection				
ENVIRONMENTAL					
Enclosure	IP 50				
Operating Temperature	-10°C ~ +40°C				
Storage Temperature	-20°C ~ +80°C				

SPECIFICATIONS	48V (12S/13S/14S) BATTERY CHARGER		
MODEL	FSP151-12S3AC8H	FSP164-13S3AC8H	FSP176-14S3AC8H
DC OUTPUT			
Output Voltage (max.)	50.4 V	54.6 V	58.8 V
Output Current (max.)	3.0 A	3.0 A	3.0 A
Output Power (max.)	151 W	164 W	176 W
Efficiency	≥ 90%		
AC INPUT			
Input Voltage Range	180 Vac ~ 264 Vac		
Input Frequency Range	47 Hz ~ 63 Hz		
MECHANICAL			
Dimensions	177 x 86 x 32 mm	177 x 86 x 32 mm	177 x 86 x 32 mm
Weight	560 g	560 g	560 g
Cooling	Convection		
ENVIRONMENTAL			
Enclosure	IP 50		
Operating Temperature	-10°C ~ +40°C		
Storage Temperature	-20°C ~ +80°C		

Electric Vehicle / Industry

Battery Chargers



SPECIFICATIONS	ON-BOARD BATTERY CHARGER (OBC)			
MODEL	FSP600-1UAC01	FSP1100-1UAC01	FSP1800C-1Q01A	FSP2800C-2Q01
DC OUTPUT				
Output Voltage (max.)	58.8 V / 54.6V / 50.4V	58.8 V / 54.6V / 50.4V	28.0V ~ 60.0V	180V ~ 302V
Output Current (max.)	10.0 A	20.0 A	30.0 A	10.0 A
Output Power (max.)	600 W	1100 W	1800 W	2800 W
AUX Voltage	-	-	11.4V ~ 12.6V	13.8V ~ 14.8V
Efficiency	≥ 90%	≥ 90%	≥ 90%	≥ 90%
AC INPUT				
Input Voltage Range	90 Vac ~ 264 Vac	90 Vac ~ 264 Vac	90 Vac ~ 264 Vac	195 Vac ~ 264 Vac
Input Frequency Range	47 Hz ~ 63 Hz	47 Hz ~ 63 Hz	47 Hz ~ 63 Hz	47 Hz ~ 63 Hz
MECHANICAL				
Dimensions	202 x 132 x 69 mm	214 x 200 x 105 mm	300 x 190 x 91 mm	309 x 168 x 264 mm
Weight	2.2 kg	4.5 kg	5.5 kg	5.2 kg
Cooling	Fan Cooling	Fan Cooling	Fan Cooling	Fan Cooling
COOMMUNICATION				
CAN Bus	Optional	Optional	Optional	Optional
ENVIRONMENTAL				
Enclosure	IP 65	IP 65	IP 65	IP 65
Operating Temperature	-15°C ~ +40°C	-20°C ~ +50°C	-25°C ~ +60°C	-10°C ~ +45°C
Storage Temperature	-40°C ~ +85°C	-40°C ~ +85°C	-40°C ~ +85°C	-30°C ~ +70°C

SPECIFICATIONS	OFF-BOARD BATTERY CHARGER	
MODEL	FSP600-1UBC01	FSP1100-1UBC01
DC OUTPUT		
Output Voltage (max.)	58.8 V / 54.6V / 50.4V	58.8 V / 54.6V / 50.4V
Output Current (max.)	10.0 A	20.0 A
Output Power (max.)	600 W	1100 W
AUX Voltage	-	-
Efficiency	≥ 90%	≥ 90%
AC INPUT		
Input Voltage Range	90 Vac ~ 264 Vac	90 Vac ~ 264 Vac
Input Frequency Range	47 Hz ~ 63 Hz	47 Hz ~ 63 Hz
MECHANICAL		
Dimensions	202 x 132 x 69 mm	214 x 200 x 105 mm
Weight	2.2 kg	4.5 kg
Cooling	Fan Cooling	Fan Cooling
COOMMUNICATION		
CAN Bus	-	-
ENVIRONMENTAL		
Enclosure	IP 54	IP 54
Operating Temperature	-15°C ~ +40°C	-20°C ~ +50°C
Storage Temperature	-40°C ~ +85°C	-40°C ~ +85°C



GLOBAL OFFICE INFORMATION

FSP TECHNOLOGY INC. (Headquarters)

NO.22, Jianguo E. Rd., Taoyuan Dist., Taoyuan City 330, Taiwan

TEL : +886-3-375-9888 / FAX : +886-3-375-6966 sales@fsp-group.com.tw / www.fsp-group.com



FSP Group

Asia

Kaohsiung Office

2-3, East 3rd Street N.E.P.Z. P.O. Box 35-25, Kaohsiung, Taiwan
TEL : +886-7-362-5611 / FAX : +886-7-363-4166

Japan Office

2905 Kosumoporusu Shinagawa BLDG, Konan 3Chome 6-21,
Minato-ku, Tokyo, 108-0075, Japan
TEL : +81-90-6965-7764

FNP TECHNOLOGY CO.,LTD.

#709, Daewoo The-Oville Prime, 1337-22, Seocho-Dong,
Seocho-Gu, Seoul, Korea (137-860)
TEL : +82-2-572-6680 / FAX : +82-2-525-1488

India Office

228, Ground Floor, Rainbow residency, Sarjapur Road,
Bangalore-560035, India
TEL : +91-80-420-362-80

Turkey Office

FSP Turkey Diş Tic. Ltd. Şti.
Merkez Mah. Ladin Sok. Terziler Sitesi K:6 No: 20/619-620
34197 Yenibosna/Bahçelievler-Istanbul - TURKEY
TEL : +90-212-232-48-68

Europe

Germany Office

Fortron/Source (Europa) GmbH
Carl-Friedrich-Benz-Strasse 13, D-47877 Willich, Germany
TEL : +49-2154-894-012-0 / FAX : +49-2154-894-012-20

Germany Office

FSP Power Tek GmbH
Carl-Friedrich-Benz-Strasse 13, D-47877 Willich, Germany
TEL : +49-2154-8873641 / FAX : +49-2154-8873642

Germany Office

Fortron/Source (Europa) GmbH
Josef-Schorer-Str. 10, D-86179 Augsburg, Germany
TEL : +49-821-809988-0 / FAX : +49-821-809988-30

Germany Office

FSP Power Solution GmbH
Jakobshöhe 16, D-41066 Mönchengladbach, Germany
TEL : +49-2161-495249-0 / FAX : +49-2161-495249-21

Nordic Office

FSP NORDIC AB
PO BOX 16183, 103 24 Stockholm, Sweden
TEL : +46(0)8-868-264 / FAX : +46(0)8-555-36122

France Office

FSP Group France
Bat 123 BP625 Zone Juliette 94392 Orly Aerogare, Cedex France
TEL : +33(0)17003-6064

U.K. Office

FSP (GB) LTD.
Unit 8, Curo Park, Frogmore, St. Albans, Hertfordshire,
AL2 2DD, United Kingdom
TEL : +44-1727-873-888 / FAX : +44-1727-873-668

United States

Southern California Office

FSP GROUP USA CORP.
14284 Albers Way, Chino, CA 91710 U.S.A.
TEL : +1-909-606-0960 / FAX : +1-909-606-0014

Southern California Office

FSP Technology USA, Inc.
8831 Research Drive, Suite 200, Irvine, CA 92618, U.S.A.
TEL : +1-949-877-3699

Southern California Office

3Y Power Technology Inc.
80 Bunsen, Irvine, CA 92618, U.S.A.
TEL : +1-949-450-0152

North America Office

FSP North America, Inc.
33 Musick, Irvine, CA 92618, U.S.A.
TEL : +1-949-305-6703 / FAX : +1-949-305-6701

Northern California Office

Sparkle Power Inc.
48502 Kato Road, Fremont, CA 94538, U.S.A.
TEL : +1-408-519-8888 / FAX : +1-408-519-9999

Northern California Office

FSP International Sources
3350 Scott Blvd., Building 13-B, Santa Clara, CA 95054, U.S.A.
TEL : +1-408-988-6615 / FAX : +1-408-988-6622

Southern California Office

Sparkle Power Inc.
17071 Green Drive City of Industry, CA 91745, U.S.A.
TEL : +1-626-839-7180 / FAX : +1-626-839-3395

Southern California Office

FSP PowerTek Inc.
22522 Avenida Empresa Rancho Santa Margarita, CA 92688, U.S.A.
TEL : +1-949-229-0088 / FAX : +1-949-888-8377

China

Wuxi Office

WUXI ZHONGHAN TECHNOLOGY CO., LTD
No.3, Xijin Rd., New District, Wuxi City, Jiangsu Province, China
无锡仲汉科技有限公司
214028 江苏省无锡市新吴区锡锦路3号
TEL : +86-510-8532-3336 / FAX : +86-510-8532-3802

Shenzhen Office

SHENZHEN ZHONG HAN SCIENCE &TECH.CO.LTD.
Room L-R, 19/F, Building A, Fortune Plaza, 7060 Shen Nan Rd.,
Shenzhen, Guangdong, China
深圳市众汉科技有限公司
广东省深圳市福田区深南大道7060号财富广场A座19楼L-R室
TEL : +86-755-8293-3191 / FAX : +86-755-8293-3190

Shanghai Office

YULI ELECTRONIC CO., LTD.
17F, No.461 Hongcao Rd., Caohejing Software Building,
Shanghai, China
上海宇力电子有限公司
上海市虹漕路461号漕河泾软件大厦17F
TEL : +86-21-5426-2808 / FAX : +86-21-5426-2818